

OAKLEY ESTATES

\$295 DOWN!

Mobile Homes Welcome

1/2 Acre Homesites

Owner Financing

**Convenient to Murfreesboro, Manchester,
Tullahoma, Winchester and Nashville**

**DO NOT RENT - when you can
OWN YOUR OWN LAND CHEAPER**

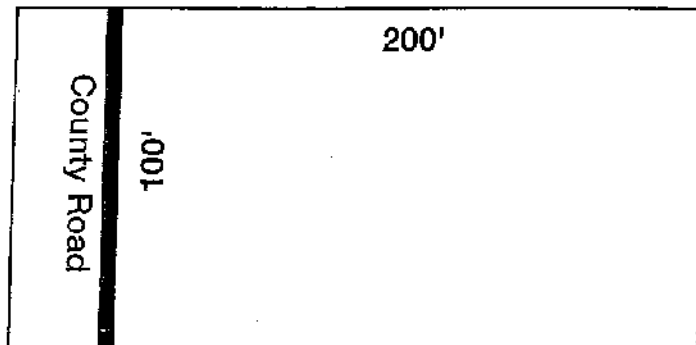
**ALL LOTS ARE \$18,995
\$295 DOWN**

**BALANCE FINANCED OVER 360 MONTHS
AT 9.9% TRUE SIMPLE INTEREST WITH
NO PENALTY TO PREPAY!
THE MONTHLY PAYMENT IS \$162.73**

**FOR MORE INFO, CALL:
1/800 762-4851**

Description: All homesites are 100 feet wide by 200 feet deep and are improved with septic tank, water tap, driveway, and powerpole and will accommodate your mobile or modular home. They are located on a paved county road.

Sample Plat:



Pricing and Terms:

Cash Price: \$18,995

\$295 Down Payment • \$176.67 Per Month

10.9% Interest for 360 months

NO CLOSING COSTS • NO PRE-PAYMENT PENALTY

Directions:

- East on Interstate 24 through Murfreesboro and on to Manchester.
- Take Exit #114 in Manchester (Hwy. 41/Manchester exit).
- Turn left at end of exit ramp and go 5.7 miles on Hwy. 41 to the junction of Hwy. 127 and Hwy. 41 in the community of Hillsboro. Turn right on Hwy. 127 and go 2.0 miles. You will cross over Interstate 24.
- Turn right on Newt Vanattia Road immediately after going over Interstate.
- Go 1/2 mile and take the first road to the right. ("A Street")
- Go 4/10ths of a mile and turn left on West 1st Street.
- Go 1 block and take a left on B Street
- Land begins 200 feet up on the left.
- Look for the signs!

**Call 1-800-762-4851 for the parcel numbers
that are available at this time!**

OAKLEY ESTATES

WALLS ROAD

ALL LOTS ONLY \$295 DOWN PAYMENT!

25	24	23	22	21	20	19	18	17	16	15	14	13	12	11	10	9	8	7	6	5	4	3	2	1		
North A Street													A Street													
26	27	28	29	30	31	32	33	34	35	36	37	38	39	40	41	42	43	44	45	46	47	48	49	50	51	52
79	78	77	76	75	74	73	72	71	70	69	68	67	66	65	64	63	62	61	60	59	58	57	56	55	54	53
North B Street													South B Street													
80	81	82	83	84	85	86	87	88	89	90	91	92	93	94	95	96	97	98	99	100	101	102	103	104	105	106
133	132	131	130	129	128	127	126	125	124	123	122	121	120	119	118	117	116	115	114	113	112	111	110	109	108	107
North C Street													South C Street													
134	135	136	137	138	139	140	141	142	143	144	145	146	147	148	149	150	151	152	153	154	155	156	157	158	159	160
187	186	185	184	183	182	181	180	179	178	177	176	175	174	173	172	171	170	169	168	167	166	165	164	163	162	161
North D Street													South D Street													
188	189	190	191	192	193	194	195	196	197	198	199	200	201	202	203	204	205	206	207	208	209	210	211	212	213	214
													218													

Farm 237 is on G St.

FOR SALE LIST - UPDATED 7/26/10

**66 - 67 - 68 - 69 - 93 - 94 - 95 - 96 - 121
- 146 - 147 - 167 - 173 - 198 - 218 - 237**

**SALES MAP - NOT OFFICIAL
NOT TO SCALE**

1/800 762-4851